



PUNJAB INTERNATIONAL PUBLIC SCHOOL

WHERE
LEARNING
COMES
NATURALLY



PRO
SPEC
TUS



**WHERE
LEARNING
COMES
NATURALLY**



Choosing a School For Your Child

The parent knows the child's temperament, personality, ability, talent, special needs and the little quirks and foibles which make him or her the unique individual whom the parents care and worry about so much.

Choosing the most suitable educational environment is probably one of the most significant decisions the parents will make on behalf of the child.

What are your child's needs?

The choice of school probably looms large in a child's mind too. He or She may have some opinions, perhaps based on where friends are going. Discuss it together. Try to get your child thinking in terms of his or her own needs which may be quite different from someone else's. Talk to your child's teachers. They will have much to contribute and may be able to make certain recommendations. However, they cannot make the decisions for your child.

Begin by considering these points :

- What are your child's academic abilities?
- What is he or she interested in?
- What are the things he or she is particularly good at?
- What are the things he or she struggles with?

Do these need to be remedied or encouraged?

- Is your child creative? In what way?
- Does the child show any sporting talent?
- What personality, strengths, and weakness does he or she have?
- What kind of school environment would your child respond to?

What are your needs?

The school will have considerable influence on your child, so it is reasonable to expect the values promoted by the school to at least approximate your own. You need to find out what you want from a School before asking what a school has to offer.

Values don't mean moral and religious values. The word can also refer to a range of social issues such as the school's attitude to affirmative action for girls. Or even something as mundane as the nutrition available at the school mess or the cafeteria. If its important to you, its not mundane.

There are also practical points to consider, such as your willingness (or the lack of it) to be involved in school related activities. Have you the time to participate in travel arrangements?

How much time and energy are you prepared to give to the school?

How does the School meet your Child's & Your Needs?

It is advisable to check what the school offers in terms of not only academic environment but also in respect of Co-Curricular Activities & Activities beyond the Curricula. All these will be responsible for shaping the life & the career of your child. Here is a check list for you.

Please See Next Page For CHECK LIST



Choosing a School For Your Child

YOUR CHECK LIST

Ethos & Values	What values & ethos does the school propagate?
Boarding & Co-Educational	Does the school offer an Exclusive or a Mixed Residential Environment? Does the school offer Co-Educational environment where boys & girls grow together sharing various activities?
Curriculum	What curriculum & Daily Schedule is in order? Are mornings & evenings well utilised? What is taught?
Subject Choices	Do the subjects suit your child's talents and interests? Will the choice of one subject prevent the study of another?
Teaching Methods	Are classes streamed? Will your child feel comfortable with these methods?
Class Size	What is the average class size? What is the teacher/pupil ratio?
Discipline	What are the school discipline rules? How are they enforced? What punishments exist? Are parents made aware of infringements?
Nutrition & Health	What quality of food is served & provided? And how? Will the child enjoy his/her food?
Sports & Extra Curricular	What Activities are compulsory ? What further choice is available?
Assessment & Reports	How are students assessed? How often are assessments done? Are they continuous? Can parents readily discuss reports with teachers?
Student Welfare	Are there programmes such as peer support, personal development and career guidance?
Special Education	What provision is made for talent children? Are remedial classes/ programmes available?

IT IS GOOD TO REMEMBER THAT

- Fee & Charges are important but secondary to the main subject of the child's personality development.
 - Travel & Distances are relevant but should not stand in the way of joining exclusive environments.



**FOYER INTERNATIONAL
HOSTEL**



**LINCOLN HOUSE
IB PYP SCHOOL**



ICSE SCHOOL



**JEFFERSON HOUSE
IB MYP SCHOOL**





INDEX

Sr. No	Subject of Interest	Page	Sr. No	Subject of Interest	Page
1	Introduction	6	14	Assessment Reports & Letters	18
2	Vision & Mission	7	15	Uniform & Dress	19
3	Ethos & Values	8	16	Tuition Fee & Hostel Charges	20
4	Campus & Location	9	17	Academic Session & Vacations	30
5	Academic Infra-Structure	9	18	Admissions & Process	31
6	Teaching Standards & Faculty	10	19	Admission & Eligibility	32
7	Computer Centre & Digital Facilities	11	20	Admissions Registration	33
8	Curriculum & Daily Schedule	12	21	Discipline & Rewards	34
9	Extra-Curricular Activities	13	22	Tuck Shop/Pick up Service	35
10	Beyond The Curricula	14	23	Assistance and Information Bureau	36
11	Hostel & Houses	15	24	Admission Form	37
12	Food & Nutrition	16	25	Concessions and Scholarships	41
13	Medical Support Services	17			



Introduction

Punjab International Public School (PIPS)

Punjab International Public School has been promoted by an educational Nonprofit Society registered under the Indian Societies Act 1860. PIPS is a fully residential Co-educational English-medium Pre-collegiate upper-end school located In the highly progressive & affluent state of Punjab. The school has been established with a view to nurture the child-boy or girl from a very early impressionable age in an open multi-dimensional environment. The emphasis always & invariably is on the balanced & integrated development of the Body, the Mind & the Spirit so as to produce adults who are Physically, Mentally & Spiritually mature enough to handle & face the vicissitudes of life with optimism, courage & fortitude.



Vision & Mission

PIPS has a Vision of creating a cosmopolitan outlook in every child that joins the School . It aims at providing a strong moral foundation for the development of the child's personality , without getting into the polemics of religion. The inculcation of the spirit of tolerance along with the determination to achieve & the desire to excel in all the endeavours is the central objective of the School's Mission.

It is the School's endeavour to teach the children to:

- Develop the courage to be impatient but also have the patience to be brave;
- Enjoy the pleasure of winning but also learn to lose with grace;
- Rejoice in the wonder of books as also to ponder the eternal mystery of birds in the sky, bees in the sun & flowers on a hillside.
- Appreciate that for every enemy there is a friend & for every scoundrel a hero;
- Understand that a rupee earned is of far more value than five stolen or found.
- Learn that a good work done is its own reward & that it is far more honourable to fail than to cheat;
- Know that while brawn & brain may be sold, there must never be a price tag on heart & soul;

And Above All

- Have faith in one's own ideas & sublime faith in oneself because then alone there can be sublime faith in mankind



Ethos & Values

PIPS subscribe to the philosophy that:

- The School must expose the children to a general -all-round education & personality development.
- The School must develop the minds of the children and also their physique, their skills, their personality and leadership traits and create a sense of fellow feeling.
- The School must practice a true equality between all students irrespective of financial status of parents and background or their colour, creed, nationality, religion or race.

The School accordingly provides for :

Academics

- A well designed Academic curriculum based on ISCE pattern & a well-programmed Daily Schedule from morning to night.
- An Academic year consisting of two Terms of five & four months, with a Summer Vacation of Two months.
- A Teaching Medium of internationally spoken English with the additional benefit of Hindi as the nationally accepted language.
- A well-planned exposure to Computer

Education throughout the stay at the School.

Co-Curricular Activities.

- An all around education with stress on Hobbies. In order to develop latent talents and skills, a variety of hobbies are offered and the choice of one per year made compulsory out of Photography, Art, Pottery, Carpentry, Metalwork, Electronics, Aero-modelling etc.
- A strong nature-awareness & adventure programmes like Gardening, Hiking & Trekking & Swimming which inculcate spirits of courage, character and leadership.
- A balanced development of talent through Debating & Elocution, Dramatics, Music etc.

Extra-Curricular Activities

- Compulsory Exposure of every child to various Extra Curricular & Sport Activities so as to enable him/her to benefit from all such activities. Cricket, Hockey, Football & Athletics are played in their respective seasons.
- An array of sports like Lawn Tennis, Roller Skating, Squash, Badminton, Basketball, Volleyball, Boxing, Swimming, etc. through qualified Staff..



Campus & Location

PIPS Campus is located on a 105 Acres site in the affluent district of Nawanshahr on an elevated hillock in the Shivalik sub-mountainous area. The Campus abuts the State Highway named after Guru Tegh Bahadur linking the Golden Temple at Amritsar with Anandpur Sahib. The Campus is located at a mean height of 998 MSL & is about 92 Kms from Chandigarh, the Capital city of Punjab & 320 Kms from Delhi, the Capital of India.

The Campus is enclosed from the front side with boundary wall. On the East side, apart from a long boundary wall, there is a steep ridge making it inaccessible except from a gorge deep below & on the other sides, it is partially boundary walled and partly fenced with barbed wire. The main Entrance Gate has day & night Security cover.

All facilities of modern living including electricity, running water supply, underground sewerage system & meandering roads are part of the Campus. Separate walls enclose the Hostel & Academic Complex with Security guards provided. Trees & shrubs adorn the whole of the Campus.



Academic Infrastructure

The Campus has Three separate & independent Academic Buildings for ICSE & IB Senior & Junior Wings. The ICSE Building on the Hill Top has Regular well-ventilated Class Rooms for Children upto Xth Class with capacity of 25 each & Labs & Rooms for Music, Painting & Arts & Crafts, Audio Visual Room, library, Computer Centre etc. It also has the office of the Principal. The total capacity of the Junior Wing is 220 Children. Additional space is available for another similar Building nearby for future expansion.

The IB has two separate Buildings - for PYP (Lincoln House) for Junior students upto Vth on the Hill Top & MYP (Jefferson House) for Senior Students VI to X on the Main Carriage Way. Lincoln House has five Class Rooms & some Labs & Library with Head Mistress Room. Jefferson House has five class Rooms in a double storey Building and there are Labs for Music, Library, Arts & Painting, Computers, Dance, & Basic Labs for Robotics, STEM & Artificial intelligence etc. for 20 Students capacity each for Class VI onwards.

All Class Rooms have been provided with the requisite Furniture & some of them have been converted into Smart Class Rooms. The IB Class Rooms are also fitted with Projectors. All the Buildings have Central Foyer & Additional Rooms for Teachers & Staff. Separate marbled / Tiled Toilets for Girls & Boys exists in both the Wings.

Teaching Standards

The School is permanently Affiliated to the Council for Indian School Certificate Examination (ISCE) vide Regn No PU065/2009 dated 3-3-2009. Teaching in the School is conducted through English Medium. The Course curriculum is based on the ISCE Syllabi, which is internationally recognized. Extensive use is made of various Teaching Aids including Audio-Visual Aids. All Class rooms display pictorial charts & maps to make learning more interesting & intelligible.

The School had recently been registered for Affiliation with International Baccalaureate (IB) for Primary Years Programme (PYP) Class I to V & Middle Years Programme (MYP) for Classes VI – X as Candidate School for Session 2022-23. IB postulates International curriculum & standards.

Daily Schedule has been tailored in a fashion not to over burden the child with mere academics. Teacher: Pupil Ratio is maintained at around 1:15 for ICSE & 1:10 for IB Classes. Class size is restricted to 30 Children for normal classroom & 20 Children for Hobbies & Labs. Emphasis is laid on developing communication skills in the child by Question: Answer Sessions & Quiz Programmes. Children are encouraged to develop their aptitude potential by providing them unmonitored access to academic tools & apparatus.

Smart Class Rooms with updated knowledge Programmers are available as also Projectors & Computers.

Faculty

The School has a well-designed network of teachers to teach as well as look after the various academic & Extra Curricular needs of the children. The Teachers, both male & female, are well trained in their respective fields of specialization whose forte is the skill of communication & conversation, so as to impart knowledge & information in the subjects of Arts & Science Streams. Teachers are periodically advised to provide support to children with latent talents & to encourage development of the Unique personality of each child.

Hobby Teachers, who excel in their skills, are ever ready to transmit their ideas & skills through interacting & easily acquirable learning programmes. There are special Teachers for Music & Painting which are considered essential for the development of the child's personality irrespective of age, sex, colour or creed. Special classes are organized for children with below average capabilities. For Junior Classes the School has Mother Teachers who look after small groups of Children & for Senior classes Teachers are made Incharge of specific Classes/Sections. For Higher Classes above 8th, Career guidance & Options are suggested & students are encouraged to pursue their strengths & aptitudes.

Special attention is paid to the development of IT skills through exposure to Computers from a very young age. Computer Teachers take practical classes and teach the children the joys of Information Technology. In the Hostels, the children spend two periods in the morning & evening in their Prep Rooms, & the Matrons provide a helping hand to them to renew & polish what they learn.

Computer Centre & Digital Facilities



Computer Centre 1: This computer centre is meant for the junior students. The facility offers intel based 20 computers which are intelligent and standalone systems. The centre has two colour printers to support any work that the students do on the system for their small projects. The centre also has compete games which engage the student to learning in a playful environment. This centre is meant for basic computer training for PIPS students up to class 5th.

Computer Centre 2: This computer centre is meant for senior pupils. The facility offers intel based high speed 30 computers operated by a high end server on a LAN network. The centre has a broadband for operating internet on the systems. The systems are operated through an individual password and their access to the internet sites are controlled and mapped on the server. This centre has a UPS system and has laser printer to support any project work activity. This centre is used for students project works & also used for teaching the pupil to operate computer systems for general purposes including office use, emails, net surfing, net search, etc.

Digital Library: The school has 05 computer systems in the regular library area dedicated for Digital Library. The systems are on LAN and have access via internet to Digital Knowledge Centres which have thousands of publications, books and journals for education purposes. This facility is for the benefit of the learned pupils and teachers who want to access more knowledge or referencing. Broadband & Wi Fi: The school has a high bandwidth broadband from BSNL for supporting the teaching campus wide wi-fi network. The access to the broadband and internet related search and website activity is controlled and monitored for education purpose use only.

Digital Class Rooms: The school is using Digital Classroom technology for teaching subjects and key topics. The digital classrooms have audio video facilities. The content for teaching the pupils is from EduComp which is latest. Subjects and Topics are explained through colourful diagrams and real time examples supported by voice/audio explanations.

Curriculum & Daily Schedule

The School Curriculum is based on ICSE Pattern. The children are prepared for undertaking examinations in due course for 10th and 10+2 Classes in Arts, Science & Allied Streams. The medium of instruction is English and great care is taken to develop fluency and accuracy in the

language.

The Daily Schedule covers the whole time from morning to night. It is ensured that the Children develop a sense of discipline without inhibiting their process of learning & creativity.

DAILY SCHEDULE

05:50 - 06:30	Wake up Bugle & Toilet	30 Minutes
06:35 - 07:05	PT/Exercise etc.	30 Minutes
(Two Groups)		
07:10 – 07:40	Bath & Ready for School	30 Minutes

MORNING SESSION

07:45 – 08.25	Prep	40 Minutes
08:30 – 09:10	Breakfast	40 Minutes
09:25 – 09:40	School Prayer	15 Minutes
09:40 – 11:00	Two Classes	40 Minutes each
11:00 – 11:15	Recess	15 Minutes
11:20 – 12:40	Two Classes	40 Minutes each
13:00 – 14:20	Lunch & Rest	80 Minutes
14:25 – 15:45	Two Classes (Hobbies)	40 Minutes each

EVENING SESSION

15:50 – 16:15	Evening Snacks & Sports Dress	25 Minutes
16:20 – 17:20	Outdoor Games, Swimming/Riding etc.	60 Minutes
17:30 - 18:10	Bath & Change of Dress	40 Minutes
18:15 – 18:35	Evening Prayer	20 Minutes
18:40 – 19:20	Prep	40 Minutes
19:20 – 20:10	Dinner	50 Minutes
20:10 – 20:55	Common Room	40 Minutes
21:15	Retire to Bed	

Extra Curricular Activities

PIPS Campus provides for most of the requisite facilities & infrastructural support for extracurricular activities. The facilities include presently two Sports grounds for major outdoor games like Football, Athletics & Cricket. A 400 metres Athletics Track provides facilities for various kinds of Track games. Facilities for Hard Court Tennis, Volleyball, Badminton & Table Tennis are available. Guru Tegh Bahadur Sports Stadium, overlooking the Sports grounds, has an in-built Gymnasium for Junior School. A Multipurpose large Hall for Indoor sports including Roller Skating alongwith another Building having Two Squash Courts are available nearby. A Swimming Pool for Beginners is also located. A separate Children Park is available for use by younger children. Indoor or Minor Games are available in the various Houses.

An open Air Theatre with a Gym for Senior School & a Basket Ball Court is available near the Faculty Houses. A large Park with a clock Tower is a landmark of the Campus.



Beyond The Curricula

- **Personality Enrichment Activities** like Debating & Elocution, Dramatics & Theatre Club, Art and Craft Competitions and Painting & Music Contests, Golf Tuitions etc. are important areas of student involvement round the year.
- **Environment Acclimatisation Activities** like Hiking & Trekking, Mountain Biking, River Rafting and exposure to Gardening & Tree Plantations are important aspects that take care of the children positive attitudes to Nature.
- **Cultural & Career Building Activities** like Creative Writing, Science Club & Photography Club, Floor Painting etc. form integral part of the Hobby Schedules.
- **Team Building Activities** aimed at inculcation of Self Discipline, Confidence & Leadership like Archery & Horse Riding Displays and Camps for Community & Social Services, make vacations & holidays both enjoyable & meaningful.
- **Character Building Activities** through development of the spirit of Tolerance & Patience, Daily morning & evening Prayers. Exposure to various Religions & their Teachings & lessons, in Yoga & Meditation are part of the spiritual strengthening programmes for the children.



Hostel & Houses

There are presently Four Hostel blocks -separate for Boys & Girls- in the Campus. The Boys hostel for Junior wing adjacent to the Junior School on Hill Top (capacity 96) with boundary wall on all sides, consists of Two houses with Eight Dormitories of 12 beds each. Each house has four Dormitories with a prep room with individual study, desk/chairs & a separate Common Toilet block, one Dining hall for Two houses with tables earmarked for each dormitory & Play rooms. This Block has the House Masters Residence & eight independent Quarters for Junior school Teachers, with gate security during the night. A second Block of Two houses is under construction, with common entrance/lobby for all Four houses. The Houses are named after the Indian flowering trees native to the Area (Amaltas, Gulmohar, Harshingar & Arjun)

The second Boys Hostel Block for Senior Wing is located at the Base of the Hillock adjacent to the Senior Wing Academic Block. It has 44 twin-shared Rooms & Lobby with Common Toilets, Dining Hall, Common Rooms & Lobby, House Masters Residence. It also has a Boundary wall on all the sides. A Faculty House with 08 Family Flats for Senior School Teachers is located nearby

The Girls Hostel block (capacity 86) with boundary wall on all sides, consists of a double-storey building with 43 twin sharing rooms with common toilet block, a separate Dining room, a common room & House Mistress residence. The Hostel has Two Houses named Gangotri & Yamumotri & has day & night security guard at the Gates.

An Independent Hostel Block on the Hill Top has been started for Foreign Students, which consists of 28 twin shared rooms with attached toilets, and Dining hall, Common rooms & other facilities with a boundary wall on all sides & a House Master's Residence. It has day & night Security Cover. The Dining Hall, Lobby & Common Room are air conditioned.

All the hostel blocks are equipped with indoors games as also badminton & volleyball. Once the child gets into the Hostel, the gates are locked for the night. There is no way he/she can get out nor any person cars enter the houses.

In order to inculcate discipline & nurture leadership qualities, all Houses have a resident student as the House Prefect. The House Perfect is chosen & appointed by the House Master/Mistress & is not only expected to assist the House Master/Mistress in all Hostel activities but also be a role model & a guide & elder brother / Sister to other inmates



Food & Nutrition

The School provides healthy & nutritious food to the Children / students residing in the Hostels to keep them healthy & fit. The Diet Schedule is prepared & checked by a Nutrition Expert so as to provide both Calories & Taste to a growing child. All the Food is cooked inside the Hostel / Mess of the School & care is taken to ensure fresh & sufficient food to each child. The Menu for the Day normally consists of:

Morning Breakfast:	:	Conrflakes/Porridge with Milk, Paneer for Veg & Two Eggs for Non-veg
Tiffin Break	:	Fruit Juice
Lunch	:	Rice/Chappatti, Two vegetables, Dal, curd/Raita, Green Salad
Evening Tea	:	Fruit/Tea/Coffee/Namkeen
Dinner	:	Rice/Chappati, One Vegetable, Sweets, curd / Chicken for Non veg & Paneer preparation for Veg.
Night	:	A Glass of milk before going to Bed.

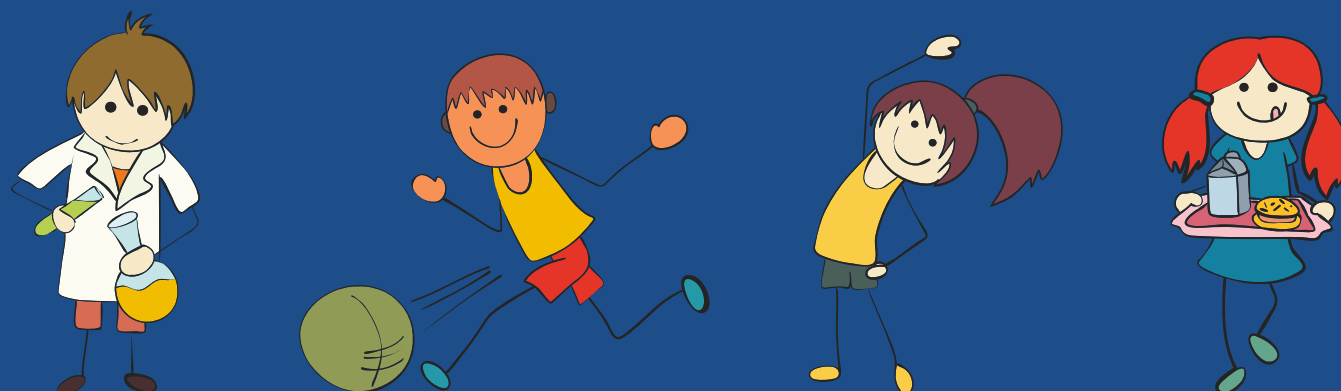
The Menu is subject to Change due to Seasons.

All Saturday evenings have Special Dinners & all Wednesday European lunch is served.

South Indian food is served once a fortnight.

Special Diet is provided to children on medical advice from the School Doctor

For Foreign Students, the Lunch & Dinner Menu is tailored to the European / South Asia cuisine, suited to the Tastes of the Boarders





Medical Support Services

The School has In-House Facilities for Medical care on First-AID or Emergency Basis. A Sick Room alongwith Six beds has been provided for Sick Children. There is a Resident Medical Assistant/Nurse to take care of Minor ailments. The School has a regular Doctor-on-call who visits the School every fortnight & is available in emergencies on Short notice.

The District Hospital at Nawanshahar & the Hospital at Anandpur Sahib are only about an hour away. In exceptional cases, the Post Graduate Institute of Medical Sciences (PGI) at Chandigarh, the premier Hospital of North India, can be reached in about two Hours travel time. Every child is medically examined by the Doctor at least twice in a Term. Special Diet is provided to the child on medical advice. In case of any Emergency, the Parent shall be informed immediately & action taken as per the Doctor's advice meanwhile.

Assessment Reports & Letters

Communication with parents by post is a regular feature and is encouraged & practised by the School. The children have to compulsorily write once a week to their parents. In case of necessity, communication by telephone is also permitted. Parents, however, are advised not to encourage telephonic communications with their children.

An updated record of each student is maintained duly computerized, in the School. From the day he/she forms to the day he/she leaves the School, his academic, ex-tra curricular & other activities as well as his health & related records are maintained. This Record helps in knowing the Child & his/her growth over the years.

The School considers it important that the Parent is periodically kept aware of the Progress of the Child. The School Maintains a folio on every child wherein child's achievements & foibles are recorded & updated on a Monthly Basis. An Assessment Report on the Achievements & Shortcomings of the Child & a Formative Report is sent to every Parent at least once during each Term. The same can also be accessed via a Dedicated App which can be downloaded from Google Play Store and iOs. The Parents are welcome to discuss the Formative Assessment Report with the Teacher. On-Line or in Person after obtaining prior appointment. The Parent inter-action is an important event for the holistic Development of the Child & the School welcomes this.



Uniform & Dress

S. No.	Dress for the School	Boys		Girls	
1	Class Room	Monday Tuesday Thursday Friday	Wednesday Saturday	Monday Tuesday Thursday	Wednesday Saturday
		Cotton Shorts (Grey), Shirt (Blue), Socks	Cotton Shorts (White), Shirt (White),	Skirt & Top (Blue), Socks (Blue), Black	Skirt & Top (Saffron), Socks
2	Sports/Games	Shorts (Grey/white), T-Shirts (White) Tracksuit (Grey) Socks/Shoes as per Games		Top Shirt (White), Skirts (Blue) Tracksuit (Yellow) Socks/Shoes as per Games	
3	Evening Wear	Pyjama Kurta (White)		Salwar Kameez (Pink)	
4	Sundays / Holidays	Casual Dress		Casual Dress	
5	Formal Occasions	Neck Tie Blazer (Navy Blue) Shirts (White) Shoes (Black) Socks (Grey)		Neck Tie Blazer (Maroon) Skirt (Grey) Shoes (Black) Socks (Grey)	
6	Winter Additional	Woolen Serge Pant (Grey) Blazer (Navy Blue) Jerseys (Grey) with PIPS Logo		Blazer (Maroon), jerseys (Red) with PIPS Logo Wollen Serge Skirt (Grey)	
7	Horse Riding/ Swimming	Swimming Costume		Swimming Costume (One Piece)	
8	Under Garments	Vests Sleeveless (White) Underwear (White), Handkerchief		Vests Sleeveless (White) Underwear (White), Handkerchief	

Tuition Fee & Hostel Charges

Session 2026-27 & 2027-28

FOR INDIAN STUDENTS

ICSE Curriculum

FOR CLASS I – V (Dormitory) (Capacity 10-14) Junior School			01 APRIL ONWARDS	
			1 ST YEAR INR	2 ND YEAR INR
REGISTRATION FEE	ONE TIME	NON REFUNDABLE	10,000.00	-
ADMISSION FEE	ONE TIME	NON REFUNDABLE	30,000.00	-
		TOTAL	40,000.00	-
TUITION FEE	ANNUAL	INCLUDES BOOK / i-Pad	1,45,000.00	1,65,000.00
BOARDING CHARGES	ANNUAL	LODGING & BOARDING	1,75,000.00	1,95,500.00
EXTRA CURRICULAR	ANNUAL	ALL GAMES & HOBBIES	70,000.00	85,000.00
		TOTAL	3,90,000.00	4,45,000.00
IMPREST AMOUNT	ANNUAL	UNUSED ADJUSTABLE	20,000.00	-
POCKET MONEY	ANNUAL	UNUSED ADJUSTABLE	20,000.00	-
			40,000.00	-
GRAND TOTAL			4,70,000.00	4,45,000.00

Initial Rs. 1,25,000/- only & Balance in Second Semester

* Fee Structure is Firm for Session 2026-27 and 2027-28

* Rs.20,000/- for Junior School & Rs.25,000/- for Senior School Extra for Uniform & Dress – Requirement to be Revised Every year.

* For Concession to Girls, Defence etc. visit page 32.



Tuition Fee & Hostel Charges

Session 2026-27 & 2027-28

FOR INDIAN STUDENTS

ICSE Curriculum

FOR CLASS VI – X (SHARED ROOM) (Capacity 02-03) Senior School			01 APRIL ONWARDS	
			1 ST YEAR INR	2 ND YEAR INR
REGISTRATION FEE	ONE TIME	NON REFUNDABLE	10,000.00	-
ADMISSION FEE	ONE TIME	NON REFUNDABLE	40,000.00	-
		TOTAL	50,000.00	-
TUITION FEE	ANNUAL	INCLUDES BOOKS/I-Pad	1,65,000.00	1,85,000.00
BOARDING CHARGES	ANNUAL	LODGING & BOARDING	2,05,000.00	2,15,000.00
EXTRA CURRICULAR	ANNUAL	ALL GAMES & HOBBIES	85,000.00	95,000.00
		TOTAL	4,55,000.00	4,95,000.00
IMPREST AMOUNT	ANNUAL	UNUSED ADJUSTABLE	30,000.00	-
POCKET MONEY	ANNUAL	UNUSED ADJUSTABLE	30,000.00	-
			60,000.00	-
GRAND TOTAL			5,65,000.00	4,95,000.00

Initial Rs. 1,25,000/- only & Balance in Second Semester

* Fee Structure is Firm for Session 2026-27 and 2027-28

* Rs.20,000/- for Junior School & Rs.25,000/- for Senior School Extra for Uniform & Dress – Requirement to be Revised Every year.

* For Concession to Girls, Defence etc. visit page 32.



Tuition Fee & Hostel Charges FOR INDIAN STUDENTS

Affordable & Convenient Payment in Installments
Initial Rs.1,55,000/- only For ICSE)
Balance in Second Semester

Important Notes

- All payments must be made through Banker's Cheque in favour of Punjab International Public School payable at Chandigarh, India or RTGS or ON LINE through the School Website Payment Gateway
- All payments must be sent alongwith the Name of the Child, Sex & Age, Enrolment Number of the Child, Class of Study, Bank, Date & amount & Payment for Session / Period
- All Charges to be paid Annually are subject to revision on Year-to-Year Basis after 2023-24.
- Tuition & Hostel Charges are required to be made in advance by 15th January for the next Academic session.
- A Rebate of 2% (Two Percent) is available if the whole amount is paid at the start of Session.
- Concession & Scholarships are available for fresh Admissions
- Merit Scholarships are Available based on Performance in Class Rooms / Playgrounds
- Payments once made are non-refundable & non-transferrable.
- Personal clothing includes one Dozen sets of Summer Uniforms & Games & Evening wear & Under garments & Necktie, Towels/Handkerchiefs etc every year & one set of woollens viz Blazer, Jersey, Pant/Skirts, Socks & one swimming costume & one set of shoes every two years.
- 10 % concession on Boarding Charges for Second / Subsequent / Child will be available.
- Fines for delayed Payments as per School Rules will be payable.
- Imprest & Pocket Money is to be replenished Every year to maintain the amount.
- Education Loans are available from Education Foundation on Zero – Interest EMI Basis.



Tuition Fee & Hostel Charges

Session 2026-27 & 2027-28

FOR FOREIGN STUDENTS

ICSE Curriculum

FOR CLASS I – V (Shared Room) (Capacity 03) Junior School			01 APRIL ONWARDS	
			1 ST YEAR USD \$	2 ND YEAR USD \$
REGISTRATION FEE	ONE TIME	NON REFUNDABLE	200	-
ADMISSION FEE	ONE TIME	NON REFUNDABLE	400	-
		TOTAL	600	-
TUITION FEE	ANNUAL	INCLUDES BOOKS	2200	2800
BOARDING CHARGES	ANNUAL	LODGING & BOARDING	2800	3000
EXTRA CURRICULAR	ANNUAL	ALL GAMES & HOBBIES	1000	1200
		TOTAL	6000	7000
IMPREST AMOUNT	ANNUAL	UNUSED ADJUSTABLE	500	-
POCKET MONEY	ANNUAL	UNUSED ADJUSTABLE	500	-
			1000	-
GRAND TOTAL			7600	7000

- Fee Structure is Firm for Session 2026-27 and Session 2027-28
- US\$ 550.00 for Junior School, & US\$ 750.00 for Senior School Extra for Uniform & Dress - Requirement to be revised Every Year.



Tuition Fee & Hostel Charges

Session 2026-27 & 2027-28

FOR FOREIGN STUDENTS

ICSE Curriculum

FOR CLASS VI – X (SHARED ROOM) (Capacity 02) Senior School			01 APRIL ONWARDS	
			1 ST YEAR USD \$	2 ND YEAR USD \$
REGISTRATION FEE	ONE TIME	NON REFUNDABLE	200	-
ADMISSION FEE	ONE TIME	NON REFUNDABLE	500	-
		TOTAL	700	-
TUITION FEE	ANNUAL	INCLUDES BOOKS	2500	2800
BOARDING CHARGES	ANNUAL	LODGING & BOARDING	3000	3200
EXTRA CURRICULAR	ANNUAL	ALL GAMES & HOBBIES	1200	1400
		TOTAL	6700	7400
IMPREST AMOUNT	ANNUAL	UNUSED ADJUSTABLE	500	-
POCKET MONEY	ANNUAL	UNUSED ADJUSTABLE	500	-
			1000	-
GRAND TOTAL			8400	7400

- Fee Structure is Firm for Session 2026-27 and Session 2027-28
- US\$ 550.00 for Junior School, & US\$ 750.00 for Senior School Extra for Uniform & Dress - Requirement to be revised Every Year.



Tuition Fee & Hostel Charges

FOR FOREIGN STUDENTS
OPTION to Pay in Two Installments
in 65:35 Ratio

Important Notes

- All payments must be made through Banker's Cheque in favour of Punjab International Public School payable at Chandigarh, India or RTGS or ON LINE through the School Website Payment Gateway
- All payments must be sent alongwith the Name of the Child, Sex & Age, Enrolment Number of the Child, Class of Study, Bank, Date & amount & Payment for Session / Period
- Payments by NRIs/Foreigners are required to be made in US Dollars
- All Charges to be paid Annually are subject to revision on Year-to-Year Basis after 2022-23
- Tuition & Hostel Charges are required to be made in advance by 15th January for the next Academic session.
- A Rebate of 1% (One Percent) is available if the whole amount is paid at the start of Session.
- Merit Scholarships are Available in Tuition Fee @ 10% - 15% based on Annual Results
- Payments once made are non-refundable & non-transferrable.
- Personal clothing includes one Dozen sets of Summer Uniforms & Games & Evening wear & Under garments & Towels/Handkerchiefs etc every year & one set of woollens viz Blazer, Jersey, Pant/Skirts, Socks & one swimming costume & one set of shoes every two years.
- 10 % concession on Boarding Charges for Second Subsequent/child will be available.
- Fines for delayed Payments as per School Rules will be payable.
- Imprest & Pocket Money is to be replenished Every year to maintain the amount.
- Education Loan @ Zero-Interest EMI is available to cover a substantial Part of Tuition Fee & Hostel Charges repayable In Eight Equal Monthly Installments



Academic Session and Vacations

The April-March Academic year is divided into two Academic Terms. The first term formally starts in April but starts actually in early July & lasts till December. The second term starts from January and lasts till early May. Summer vacations last for two months from early May to early July. Winter vacations are for a short duration of two weeks only in December/January season.

All Academic & Extra-curricular activities form part of the child's daily routine in both the Terms. A Regular Schedule / Calendar of Activity is planned for the Two Semesters & all students have to participate in the Events. Individual & Team Competitions are held in order to foster Team Spirit & Leadership qualities. Term-end Examinations are held in the First Term & the Final class examinations in the Second Term.

The School organizes Tours & Excursions spread over India during Winter Vacations for groups of children. The School organizes Foreign Tours during Summer Vacations to USA & UK. Academic Institutions as well as to Country of Interest of students. It has already planned a Foreign Tour to NASA (USA) during the summer of 2022 & proposes to organize a Foreign Tour to UK Schools & Colleges. These are optional on Extra payment for children but the School recommends such Tours.



Admissions & Process

A. General

Admissions to PIPS are restricted every year to Direct Entry normally in classes 1st to 4th only for boys & girls in the age group of 5-10 years as on 01st March of relevant Academic. Some seats that may fall vacant in classes 5th to 9th may also be available for Direct Entry. Admissions are made every April-May to the extent of seats falling vacant when the students pass out in March/April every year. Admissions are strictly made in accordance with general merit & talent of the child based on an objective assessment by the Principal. The Teacher or Administrative Staff has no role to play in this process. Admission to the various classes are open to all students world-wide irrespective of their Religion, Colour, Nationality, Community, Race, etc. The child must, however, be prepared to receive tuition and teaching through the medium of English and, therefore, must have working knowledge of the Language. There are limited seats for direct entry to the School.

B. Admission Process

C. For Junior School Admission is a Single Stage Process of Application along with Previous School Certificate, If any & direct admission as per the Principal's assessment & Decision .There is no Entrance Test.

D. For Senior School Admission is a Two-Stages:-

Stage – I: Test will be On Line / Skype Test in English, and General Knowledge.

Stage – II : After the Written Test is evaluated, the child is admitted as per the standards decided and parent intimated.

The Principal may, on the request of the Parent, directly admit a child without the Entrance/Written Test, on the basis of a general assessment of merit



Admissions & Eligibility

C. Eligibility for Admission

To be eligible for Admission, a boy/girl must be in the age group as under on 1st March of the Year.

Class of Study	Age Group (years)
First	5-6
Second	6-7
Third	7-8
Fourth	8-9
Fifth	9-10
Sixth	10-11
Seventh	11-12
Eighth	12-13
Ninth	13-14

Since Hindi is a compulsory language upto Class X, all boys/girls in India are required to appear for a one hour test in Hindi after they join the School. Exemption from appearing in Hindi will be given to those children whose mother tongue is not Hindi and who came from non Hindi speaking States/Countries, or who are residents abroad and have not studied Hindi over the past five years. In such cases, parents should inform the School office prior to Admission. For Foreign Students Hindi may be relaxed.



Admission Registration

D. Registration for Admission

PIPS encourage registration of Children for future years in advance. This is also advisable for careful & loving parents so as to plan the education of their children. The School maintains a Waiting List for future years & offers Seats on First-come-First Served Basis in the particular year giving Extra weight age to such Registration.

To register on the PIPS Waiting List, please fill the On-Line Registration-cum-Admission Form along with a Demand Draft/Banker Cheque of Rs. 11,000/- or US\$ 250.00 for NRIs / Foreigners as Registration Fee. Please send the complete Form to the school with a copy the Birth Certificate. Registration Fee is non-transferable and non-refundable. On completion of these formalities, the Child will be allotted a Registration Number, which shall be used in all subsequent correspondence. You may register your child any time soon after his/her Birth for the Academic Session & the Class to which you may desire.

All foreign residents are required to pay the Registration Fee in US Dollars or Equivalent only.

Reminders will not be necessary but it is essential that change in address be promptly notified.

E. Admission Form

One Serial Numbered Registration-cum-Admission Form is available along with this Prospectus. Please go through the same carefully & fill the same. The duly filled form may be sent to **The Principal, Punjab International Public School, Admission Head office, Pips Pojewal Shivalik Hills GTB Highway Road Distt Nawanshahar Punjab, India.** The Banker's Cheque/Demand Draft should be in the name of Punjab International Public School payable at Chandigarh, India.

The ON-Line Registration-cum Admission Form will be allotted a Serial Number after Receipt & communicated to the Parent



Discipline & Rewards

- The School recognises the need for recognition of achievement as well as punishment for errant behaviour. The school has eschewed Corporal Punishment from its inception, and lays its faith in the Trust. The School believes that Punishments should be corrective and nonhumiliating.
- The School has a Prefectorial system consisting of the School Prefect and House Prefects. The Prefects enforce day to day discipline, award minor punishments such as rounds, Change in Break, extra P.T. Etc.
- The School has a system of Rewards & Punishments for Children through Issuance of Stars & Stripes. Good Conduct & Excellence in Skills/sports/Extra curricular Activities are recognized through Stars issued by the House Master, recommended by the House Perfect & any complaints about misconduct, indiscipline or unacceptable demean-our attracts Stripes. The Parent is duly informed about such Issuance of Stars & Stripes. The overall idea behind is to grant recognition or to provide caution & opportunity for Rectification to the child.
- The School does not permit the keeping or handling of cash. Each girl/boy has an account with the School Bank, into which his/her pocket money is credited every Term. He /She is issued a chequebook and can en-cash cheques for coupons. In its endeavour to constantly create a total sense of equality, the School discourages Tuck from Home, Special food, expensive food, Mobiles, Cameras and the like.
- Parents/Local Guardians may visit their wards normally once in a Term with due prior permission of the Principal. Visiting parents are not allowed to visit or take the child out more than once a month and that too, subject to the House Master's discretion. Spending a night out is forbidden, even with the parent.
- During Term time, the School allows a boy or a girl out for the weddings of blood brothers or sisters; cousins even in a joint family do not qualify. For such occasions, the child is allowed to spend two nights at home, plus travel time, provided the School receives advance notice and clear cut travel instructions. Visits home for deaths or serious illness in the family will be permitted.
- The Students are not permitted to keep or use Mobiles phones or such gadgets. They may be allowed to use the Phones once in a week by the House Master/Mistress to the duly authorized Parent/Gurdian.



Tuck Shop

A Tuck Shop is run in the School Campus which opens on a weekly basis. A Tuck Shop provides small articles for daily use & eatables & snacks not normally served in the School Mess. Articles for birthday parties are also available. Every child has a Pocket Money, against which Purchase Vouchers are provided. The expenditure from the Pocket Money at the Tuck Shop is monitored by the House Master/Mistress. The School does not allow handling of cash by the Children & Parents are advised not to provide their wards with cash.

Pick Up Service

Pick up services for children are organised by the School for both Indian & Foreign students. For Indian students, School Pick-Up Parties are arranged from / upto Chandigarh, New Delhi, Sirinagar, Guwahati, Allahabad & Patna. Parents are advised to leave/collect children at the Railway station & thereafter it is the School responsibility to escort the children upto/from the School. For Overseas students, arrangements are made for Pick-up of the children from / upto New Delhi Airport. Similar arrangements are made for outward journeys from the School.



Assistance and Information Bureau

The School Campus as well as Services & Facilities are open to visitors who are welcome to enquire about them. The following School staff may be contacted for information on various purposes:

S.No.	Subject	Person	Tel. No.
1	Academics & General Interaction	Principal	+91 9592949991
2	General Informations	Co-ordinator	+91 8432941228
3	Admissions & Registrations	Admission Counsellor	+91 9592949995 & 9592949992 (Whatsapp)
4	Campus Management & Security	Campus Supervisor	+91 9592949998

Information by post may also be obtained by addressing letters to

The Principal
Punjab International Public School
GTB State Highway, Pojewal,
Distt. Nawanshahar,
Punjab - India

Email ID: pipspojewal@gmail.com / Website: pipsinternational.in



S.No. _____

PUNJAB INTERNATIONAL PUBLIC SCHOOL

Campus: GTB State Highway, Pojewal, Distt. Nawanshahar, Punjab - India

Registration-cum-Admission Form

Note: This is Permanent Record to be maintained by the School. Please fill the same carefully.
(Please write in block/capital letters only & Strike out whichever is not applicable)

Name of Student (in full) _____

Sex (M / F) _____

Session for which Registration sought _____

Class (Admission sought) _____

Date of Birth (Attach Proof) / Age _____

Nationality / Passport No. _____

Previous School attended Name: _____ Country: _____

Last : _____ City: _____

Proposed year/date of joining PIPS _____

Aptitude: _____ Academic: _____

Personality: _____ Extra-Curricular _____

Father's Name (in full) _____

Occupation/Designation _____

Mother's Name (in full) _____

Occupation/Designation _____

Address for Correspondence/Temporary (Please write Pin Code Numbers)

Address Permanent

Address for Correspondence

Local Gurdian (in India)

Country: _____

City: _____ Pin _____

Locality /Area: _____

Mobile No/ Email:- _____

Note: Please intimate any change in address at the earliest.

S.No. _____

Person allowed to meet the child with Relationship _____

Name & Addresses & Mobile No. _____

Registration Fee Deposit Amount _____

Enclosures:

1. Cheque / Bank Draft No. _____

2. Proof of Age _____

3. Medical Certificate : _____

Signature

Date : _____

Name : _____

Place : _____

Relationship : _____





S.No. _____

Medical Certificate

(For all Boards of Punjab International Public School, Pojewal, Punjab – India)

Student's Medical Examination/Test must not be more than one month old at the time of admission.

Particulars

Name of the Student _____ S/o _____

R/o _____ Blood Group _____

Age: _____ Height: _____ Sex: _____ Weight _____

Date of Examination _____

History of any major illness such as Epilepsy, Asthma, Tuberculosis, Rheumatic Fever, any Cardiac Illness etc.

History of any Allergy Reaction to any medication:

History of: (a) Nocturnal Enuresis (Bed Wetting)

Yes/No

(b) Somnambulism (Sleep walking)

Yes/No

Report on present general condition:

1. Skin _____

2. Eyes _____

(Specs, if any) Left _____ Right _____

Note: if the Student wears spectacles, two extra pairs should be sent with the child.

3. Throat _____

4. Chest _____

5. Cardiovascular System (CVS) _____

6. Abdomen _____

Vaccination	Given	Due date
BCG		
Tripe Antigen		
MMR		
Typhoid		
Hepatitis B		
Tetanus Toxoid		

Parent/Gurdian's Signature

Name :

Date:

Medical Officer's Stamp & Signature

Name:

Date :

Note: This is Permanent Record to be maintained by the School. Please fill the same carefully.



Concessions & Scholarships

Session 2025-27

FOR INDIAN STUDENTS

Admission Stage

- | | |
|--|--------------------------------------|
| •Early Bird Admission | - 20% Tuition Fee & Boarding Charges |
| •All Girl Students | - 15% Tuition Fee & Boarding Charges |
| •Defence & Martyrs | - 20% Tuition Fee |
| •Second Child & onwards | - 15% Tuition Fee |
| •Merit Scholarships above 75%
in previous class | - 15% Tuition Fee |

Every Year

- | | |
|---------------------------------------|--------------------------------------|
| •Single Mother Child | - 15% Tuition Fee |
| •Girl Child | - 15% Tuition Fee & Boarding Charges |
| •Defence & Martyrs Wards | - 15% Tuition Fee |
| •First Three Positions in Every Class | - 15% Tuition Fee |
| •Sports Excellence | - 10 % Tuition Fee |

Notes:

1) Maximum Two Concessions/scholarships can be availed of by a child apart from 20% Origin Concession

2) Concessions & Scholarships Every Year shall continue for the full time / period the child remains in the school.

